



4325 Alexander Dr., Alpharetta, GA 30022-3740, USA



January 10, 2009
Crown Plaza Times Square
New York, New York, USA

January 24, 2009
Westin Chicago River North
Chicago, Illinois, USA

February 7, 2009
Palace Hotel
San Francisco, California, USA

February 7, 2009
Crown Plaza Times Square
New York, New York, USA

REGISTRANT INFORMATION

A084

DEGREE: M.D. Ph.D. Pharm.D. RN Other _____
SPECIALTY: Hematology Medical Oncology Nursing Radiation Oncology
 Surgery Other _____

FIRST NAME _____ MI _____ LAST NAME _____
EMAIL ADDRESS _____ TELEPHONE _____ FAX _____
INSTITUTE _____ DEPARTMENT _____
ADDRESS _____

CITY _____ STATE/PROVINCE _____ ZIP/POSTAL CODE _____ COUNTRY _____

CONFERENCE DATES
 January 10, 2009 New York, NY **February 7, 2009** San Francisco, CA
 January 24, 2009 Chicago, IL

REGISTRATION FEES
Physicians **0 \$99.00**
Nurses/Fellows* **0 \$45.00**
**Proof of eligibility must accompany registration; cannot be combined with any other discounts*
Pharmaceutical Industry **0 \$175.00**

PAYMENT METHOD
 American Express MasterCard Visa
 Check in the amount of \$ _____

CARDHOLDER'S NAME _____ SIGNATURE _____
CARD NUMBER _____ EXP. DATE _____

Check if you require special facilities or assistance and attach a note with specific details and requirements.

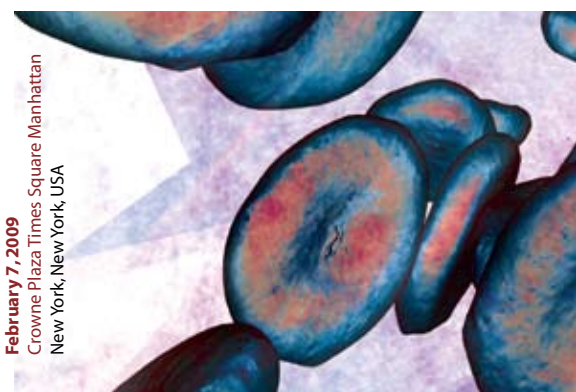
To pre-register, registration and payment must be received no later than 5 business days before meeting. Please register onsite after this date. Contact Imedex at +1 (678) 242-0906 or visit our website at www.imedex.com to ensure that the program is being held as scheduled and to confirm that the meeting is not full.

For registration fees to be refunded, written notice of cancellation must be received at meetings@imedex.com no later than 5 business days before meeting. The amount of registration fees remitted, minus a \$25 administrative charge, will be refunded after the conference. Substitutions are accepted with written notification. No refunds will be made if notice is received after 5 business days before meeting.

Imedex does not accept responsibility for covering travel, accommodation or any other costs incurred by registrants in the rare event that this program should be canceled for any reason. Every effort will be made to give reasonable notice in the event of cancellation. The event agenda content is subject to change without notice.



Imedex® is committed to environmental excellence. This publication is printed on FSC-certified paper, which is acid-free and elemental chlorine-free, and contains 50% recycled content including 25% post-consumer waste.





HEMATOLOGY

HIGHLIGHTS

News from the 50th Annual Hematology MeetingOrganized for **NOCR**
The Oncology Professionals' Network**January 10, 2009**

New York, New York, USA

January 24, 2009

Chicago, Illinois, USA

February 7, 2009

San Francisco, California, USA

February 7, 2009

New York, New York, USA

**EDUCATION IS THE BEST MEDICINE®**

WWW.IMEDEX.COM



HEMATOLOGY

HIGHLIGHTS

News from the 50th Annual Hematology Meeting

January 10, 2009
New York, New York, USA

January 24, 2009
Chicago, Illinois, USA

February 7, 2009
San Francisco, California, USA

February 7, 2009
New York, New York, USA

CONTINUING MEDICAL EDUCATION



Imedex, LLC is accredited by the Accreditation Council for Continuing Medical Education (ACCME®) to provide continuing medical education for physicians.

Imedex, LLC designates this educational activity for a maximum 6.0 of *AMA PRA Category 1 Credits*™. Physicians should only claim credit commensurate with the extent of their participation in the activity.

WHO SHOULD ATTEND

This educational activity is designed for hematologists/oncologists, internists, and other healthcare professionals (physician assistants, nurses, nurse practitioners, and pharmacists) with an interest and/or involvement in hematologic malignancies.

OBJECTIVES

After successful completion of this course, participants should be able to:

- Analyze emerging data on multiple hematologic malignancies and benign abnormalities toward improved patient outcomes
- Explain the limitations and benefits of new and emerging therapies for the treatment of patients with benign and malignant hematologic conditions
- Incorporate emerging data into the clinical management of patients with benign and malignant hematologic conditions
- Discuss ways in which current clinical practice should be modified based on the latest advances in hematology

FACULTY

Rafat Abonour, MD
Indiana University Medical Center
Indianapolis, Indiana

James O. Armitage, MD
University of Nebraska
Medical Center
Omaha, Nebraska

William I. Bensinger, MD
Fred Hutchinson Cancer
Research Center
Seattle, Washington

Asher A. Chanan-Khan, MD
Roswell Park Cancer Institute
Buffalo, New York

Morton Coleman, MD
Weill Medical College of
Cornell University
New York, New York

Larry D. Cripe, MD
Indiana University
Melvin and Bren Simon Cancer Center
Indianapolis, Indiana

Myron S. Czuczman, MD
Roswell Park Cancer Institute
Buffalo, New York

Marcel P. DeVetten, MD
University of Nebraska
Medical Center
Omaha, Nebraska

John F. DiPersio, MD, PhD
Washington University
School of Medicine
St. Louis, Missouri

Alessandra Ferrajoli, MD
The University of Texas
M.D. Anderson Cancer Center
Houston, Texas

Rafael Fonseca, MD
Mayo Clinic
Scottsdale, Arizona

Peter L. Greenberg, MD
Stanford Comprehensive
Cancer Center
Stanford, California



HEMATOLOGY

HIGHLIGHTS

News from the 50th Annual Hematology Meeting

January 10, 2009
New York, New York, USA

January 24, 2009
Chicago, Illinois, USA

February 7, 2009
San Francisco, California, USA

February 7, 2009
New York, New York, USA

FACULTY *continued*

Ronald Hoffman, MD
Mt. Sinai School of Medicine
New York, New York

Sagar Lonial, MD
Emory University
Winship Cancer Institute
Atlanta, Georgia

Ruben A. Mesa MD
Mayo Clinic
Rochester, Minnesota

Nikhil C. Munshi, MD
Dana-Farber Cancer Institute
Boston, Massachusetts

Stephen D. Nimer, MD
Memorial Sloan-Kettering
Cancer Center
New York, New York

Owen A. O'Connor, MD, PhD
Columbia University
Herbert Irving Comprehensive
Cancer Center
New York, New York

Carol S. Portlock, MD
Memorial Sloan-Kettering
Cancer Center
New York, New York

Jerry P. Radich, MD
Fred Hutchinson Cancer
Research Center
Seattle, Washington

Paul G. Richardson, MD
Dana-Farber Cancer Institute
Boston, Massachusetts

Gail J. Roboz, MD
Weill Medical College of
Cornell University
New York, New York

Seema Singhal, MD
Northwestern University
Chicago, Illinois

Steven P. Treon, MD, PhD
Dana-Farber Cancer Institute
Boston, Massachusetts

HOTEL ACCOMMODATIONS

Crowne Plaza Times Square Manhattan

January 10, 2009

1605 Broadway
New York, New York 10019
+1 800 243 6969 (toll-free from USA only)

Rate: \$279 +13.375% tax +\$2 per room

Hotel Registration deadline: December 9, 2008

Westin Chicago River North

January 24, 2009

320 North Dearborn Street
Chicago, Illinois 60610
+1 800 937 8461 (toll-free from USA /Canada only)

Rate: S-\$159/D-\$189 + 15.4% tax; \$30/night for extra person

Hotel Registration deadline: December 24, 2008

Palace Hotel

February 7, 2009

2 New Montgomery Street
San Francisco, California 94105
+1 888 627 7196 (toll-free)

Rate: \$229 + 14.065% tax

Hotel Registration deadline: January 14, 2009

Crowne Plaza Times Square Manhattan

February 7, 2009

1605 Broadway
New York, New York 10019
+1 800 243 6969 (toll-free from USA only)

Rate: \$279 +13.375% tax +\$2 per room

Hotel Registration deadline: January 6, 2009

For the convenience of attendees, a limited number of rooms have been reserved at the conference hotel along with the discounted rate and cut-off date as noted above plus tax. This rate is not guaranteed outside the conference dates.

To reserve your room please contact the hotel reservations department at the phone number above. To receive the group rate, callers must identify themselves as being with the 2009 Hematology Highlights Meeting. Reservation requests received after the hotel cutoff date as noted above may not be guaranteed the group rate.

COURSE AGENDA

***This is a draft agenda. Final topics to be selected based on abstracts released during the 2008 ASH® Meeting.*

7:00 am	Breakfast and registration
8:00 am	Welcome and introduction
8:15 am	Multiple Myeloma
9:20 am	Chronic Lymphocytic Leukemia (CLL)
10:00 am	Break
10:30 am	Myelodysplastic Syndromes (MDS)
11:15 am	Chronic Myelogenous Leukemia (CML)
11:55 am	Lunch
1:15 pm	Myeloproliferative Disorders (MPD)
1:55 pm	Lymphomas
3:00 pm	Break
3:20 pm	Acute Leukemia
4:00 pm	Adjourn

Please visit www.imedex.com for the most up-to-date program and to register.

Imedex is a brand and assumed name used by Imedex, LLC (hereby referred to as Imedex). Imedex is solely responsible for this agenda's content. Although Imedex attempts to ensure that the information in our program is accurate and timely, matters and opinions discussed and/or presented with respect to clinical matters are those of the discussion participants only, and not necessarily those of Imedex. Moreover, although Imedex attempts to identify and integrate the most qualified medical professionals in our program, TO THE FULLEST EXTENT PERMITTED BY LAW, IMEDEX EXPRESSLY DISCLAIM ALL WARRANTIES, EITHER EXPRESS OR IMPLIED, STATUTORY OR OTHERWISE, INCLUDING BUT NOT LIMITED TO THE IMPLIED WARRANTIES OF MERCHANTABILITY, NON-INFRINGEMENT OF THIRD PARTIES' RIGHTS, AND FITNESS FOR A PARTICULAR PURPOSE, WITH RESPECT TO THE CONTENT PRESENTED. IMEDEX FURTHER MAKES NO REPRESENTATIONS OR WARRANTIES ABOUT THE ACCURACY, RELIABILITY, COMPLETENESS OR TIMELINESS OF THE CONTENT OR ANY MATERIAL PRESENTED.

In addition, the material presented and related discussions are not intended to be medical advice, and the presentation or discussion of such material is not intended to create and does not establish a physician-patient relationship. Medical advice of any nature should be sought from an individual's own physician.

Neither Imedex nor any of its subsidiaries or affiliates is affiliated with or formally endorsed by a medical society.

© 2008 Imedex, LLC. All rights reserved. Reproduction in whole or part is prohibited without prior written consent from Imedex and contributing faculty.

CORPORATE SUPPORT

The following companies have provided educational grants in support of this series:

GOLD



**Millennium
Pharmaceuticals, Inc.**

SILVER



BRONZE

**Genentech BioOncology
& Biogen Idec**

Several options are available to companies interested in supporting this series. For more information, please contact Imedex at +1 (770) 751 7332, or by email at cme@imedex.com.

SERIES ORGANIZER



4325 Alexander Drive
Alpharetta, Georgia
30022-3740, United States
Tel.: +1 (770) 751 7332
Fax: +1 (770) 751 7334
www.imedex.com

REGISTRATION FEES

Physicians	\$ 99.00
Nurses/Residents/Students*	\$ 45.00
<i>*proof of eligibility must accompany registration; cannot be combined with any other discounts</i>	
Pharmaceutical Industry	\$175.00

REGISTRATION PROCEDURES

To Register: You may register online up to 5 business days before the meeting at www.imedex.com, by calling Imedex at +1 (678) 242 0906 or by returning the registration form in this program by mail or fax. If you mail the form, please keep a copy for your records. Registration confirmations will be issued before the meeting.

Payment: To pre-register, registration and payment must be received no later than 5 business days before the meeting. Please register onsite after this date. Contact Imedex at +1 (678) 242 0906 or visit our website at www.imedex.com to ensure the course is being held as scheduled and to confirm that the meeting is not full. Registration fees must be remitted by credit card or check. Checks should be payable to Imedex, LLC. Attendee is not registered until full payment is received.

Registration Fee Inclusions: Registration fees include admittance to all scientific sessions, conference materials, processing of certificates of attendance or continuing medical education, and all event functions as specified in the agenda.

Cancellation: For registration fees to be refunded, written notice of cancellation must be received at meetings@imedex.com no later than 5 business days before the meeting. The amount of registration fees remitted, minus a \$25 administrative charge, will be refunded after the conference. Substitutions are accepted with written notification. No refunds will be made if notice is received after 5 business days before the meeting.

Imedex does not accept responsibility for covering travel, accommodation or any other costs incurred by registrants in the rare event that this meeting should be canceled for any reason. Every effort will be made to give reasonable notice in the event of cancellation. The event agenda is subject to change without notice.

AUDIENCE PARTICIPATION A HANDS-ON EXPERIENCE

During the scientific sessions, speakers and the audience can exchange information through a "hands-on" computerized speaker-audience interaction system. With this state-of-the-art equipment, participants answer multiple choice questions, and within seconds, the answers are calculated and projected on a screen in tabular or graphic form for all to see. This system maximizes the ability for attendees from diverse disciplines to see differing opinions and compare consensus between the speakers and each other.

4 EASY WAYS TO REGISTER



PHONE

+1 (678) 242 0906



FAX

+1 (678) 242 0920



MAIL

Imedex®
4325 Alexander Drive
Alpharetta, Georgia
30022-3740, USA



WWW ONLINE

www.imedex.com

3 WAYS TO LEARN:



PRINT materials are produced by Imedex for your reference needs



ONLINE products are produced by Imedex in 6 user-friendly formats



LIVE meetings are produced by Imedex in 15 countries

Visit www.imedex.com to learn more.