

ASCO 2009
Leukemias, MDS, Transplantation

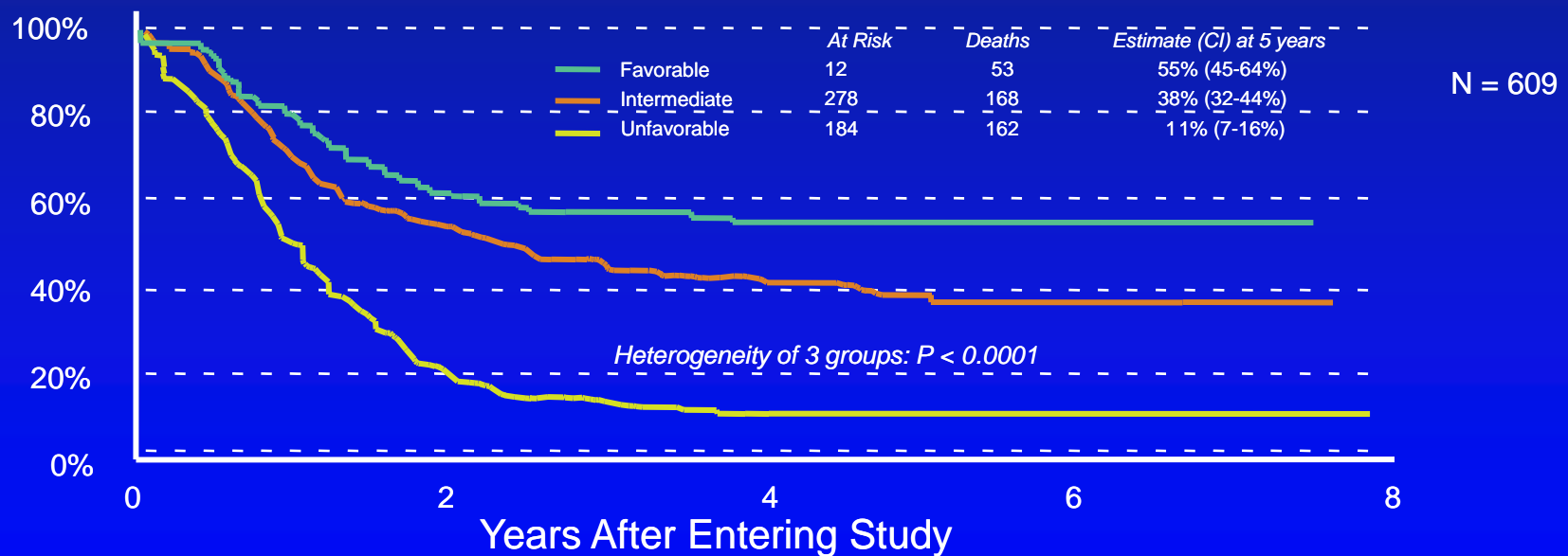
EJ Feldman M.D.

Weill-Cornell Medical College

AML: Karyotype and Prognosis

Results From ECOG 3489/SWOG 9034

Overall Survival Patients Age 16-55 With Untreated AML

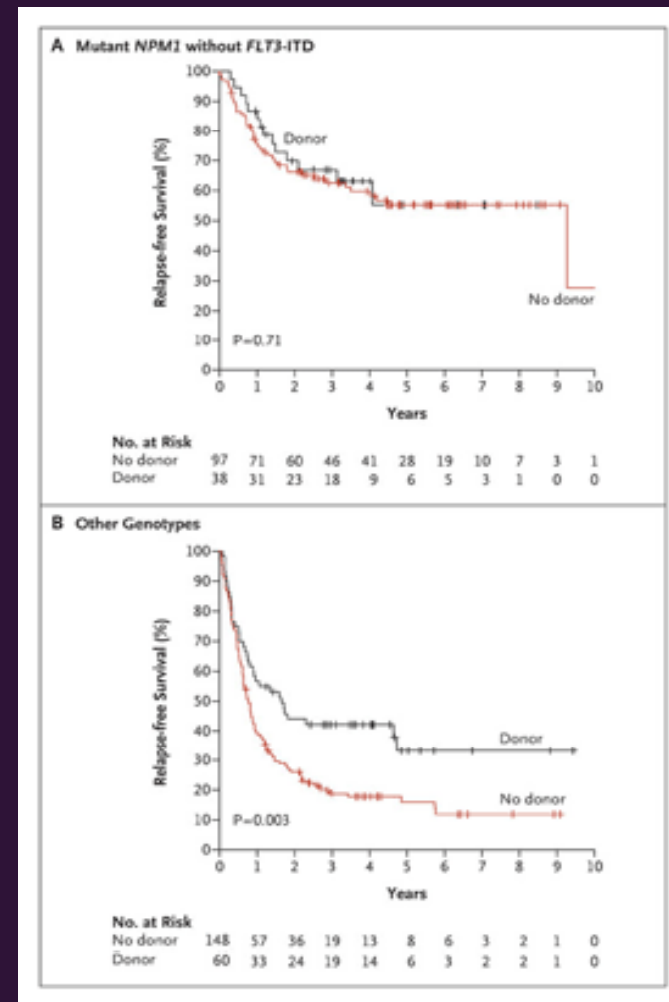
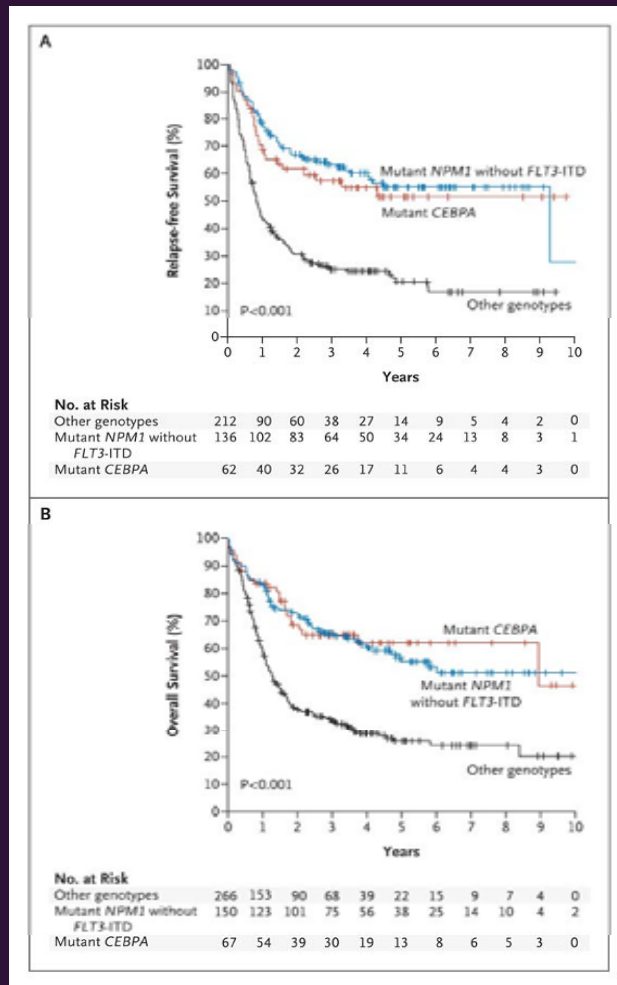


Abstract # 7000

NPM1 Mutations in CN AML

- CN AML: Largest # of Pts
- Intermediate Prognosis---25-40% cure rate
- Flt-3 and NPM1 prognostic in Pts < age 60
- *? Prognostic value in older Patients*

CN AML in CR1: outcome by mutational analysis



NPM1 Mutations in AML > age 60

- 189 AML Pts > age 60
- Rx with dauno/ara-c regimen
- Multivariate analysis—independent variable

	NPM1 mut	NPM1wt	P value
CR%	84	48	<0.001
3 yr DFS%	23	10	0.047
3 yr OS%	35	8	<0.001

Abstract 7015

FLT3 Mutations in CG subgroups of AML

- 481 AML patients—retrospective review
- Most common in CN group (32%)
- Uncommon in poor risk CG (7.6%)
- *OS unaffected in good and poor risk CG groups*
- *Confirmed prognostic effect in CN group*

Abstract 7002: Molecular Risk Classification in AML < age 60

- NPM1 Flt-3 mutational status prognostic in CN AML
 - Other mutations:
CEBPA, WT1
 - Over expression:
BAALC, ERG
- *** Prognostic classification improved

Abstract 7003 Is there a benefit to higher doses of anthracyclines in AML?

- ECOG E1900
- Daunorubicin 90 mg/m² vs 45 mg/m² in traditional 3+7 regimen
- Denovo AML ages 16-60 yrs (median 48 yrs)
- Post-remission Rx varied (Hidac, Allo/auto SCT)

Survival ECOG E1900

	Dauno 45mg/m ²	Dauno 90 mg/m ²	P value
Median OS (months)	15.7	23.7	0.003
< age 55 (n=459)	16.5	28.6	0.002
> Age 55 (n=174)	12.6	16.3	0.63
Median OS (months)			
Fav/int CG (n=358)	20.7	34.3	0.004
Unfav CG (n=122)	10.2	10.4	0.45
Median OS (months)			
FLT3mut (n=147)	10.2	15.2	0.3
FLT3wt (n=256)	18.9	28.6	0.002

Abstract 7007

Dasatinib for imatinib-resistant/intolerant CML

- Dasatinib 100 mg daily—optimal dose/schedule
- Actuarial 36 month follow-up:
 - CCR 50%
 - MMR 39%
 - PFS 81% (77%-Pts with bcr/abl mut)
 - OS 91%

Abstract 7010

Decitabine in elderly AML

- Phase 2 single institution trial
- 33 patients, median age 74
- CR in 14/33 42%
- Median follow-up 8 months

AML > age 60 yrs

Regimen	# Patients	Median age	CR %	Median surv.
Low-dose ara-c	116	74 yrs	18%	6 months
Decitabine 5d	55	70 yrs	24%	7 months
Azacytidine	20	68 yrs	20%	NA
Decitabine 10d	33	74 yrs	42%	NA
Clofarabine	116	71 Yrs	38%	NA
Cloretazine	140	74 yrs	29%	3 months
Dauno/ara-c	120	70 yrs	43%	7 months

Abstract 7011

Decitabine in advanced MDS

Study	Med# cycles	CR%	OR%	Time to AML/death	PFS (months)	OS (months)	TI Red %
<u>3-days</u> D-0007 (n=89)	3	9	30	10	7.3	12.8	23
EORTC (n=119)	4	13	34	8.8	6.6	10.1	32
<u>5-days</u> Daco-020 (n=99)	5	15	43	12.1	8.1	17.8	33
IDD3 (n=93)	7	37	65	15.2	9.2	20.3	NA

Abstracts 7043/7044

Ofatumumab in CLL

- New anti-CD20 monoclonal antibody
- More active in CDC of B-cells than rituximab
- 138 refractory CLL patients:
 - Double refractory (flud+alemtuzumab)
 - Bulky flud refractory
- 2 gms weekly X 8 and then monthly X 4 doses

Ofatumumab in CLL

- ORR 58%
- Improvement in Sx's, adenopathy, organomegaly, blood counts.
- Median OS 13.7 months
- *No influence by prior rituximab Rx*